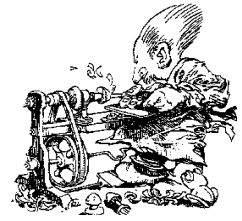




Chatter and Catches

the Newsletter of the

CARSON VALLEY
WOODTURNERS
August 2012



President's Gouge

I would like to thank all of you who helped at the club BBQ held July 21st at Wayne and Maggie Porter's residence, and special thanks to Wayne and Maggie for hosting the BBQ. There was also a show-and-tell session and raffle. Several members in attendance felt that this should be an annual event. The board will discuss the possibility of having an annual BBQ and we will let you know the decision. Lastly, thanks to Bill Elerick for donating a plunge / fixed base router set to the club.



Some of you may not be aware that Dwayne Walker purchased a new lathe at the AAW Symposium in San Jose. Dwayne subsequently offered his Delta midi-lathe to the club at a reduced rate. The Board decided to purchase the lathe which is the same model as the three the club currently has. This gives us four lathes to be used during the hands-on sessions and for our outreach program with the Silver Stage High School. The Board has decided that we will not be purchasing any more lathes at this time. It was very nice of Dwayne to offer his lathe to the club at a reduced price, and I would like to personally thank him for his generosity.

I realize that summer is a very busy time for most of us with vacations and other activities. I missed the July BBQ and will also miss the August meeting due to my summer plans. We understand if you are not able to make the monthly meeting or other club activities that may be scheduled. Our August meeting will be held at Dave Mills' shop on Saturday, August 11th at 9:00 a.m. Dave Mills and Ron Burdick will be demonstrating two different vacuum chuck systems. In addition, Ron will have the tools he manufactures available to display for those members who may not have had the opportunity to see them before. Dave will also be demonstrating a router jig he made for use on the lathe.

Dave Mills is hosting a hands-on session on Saturday August 25th for those of you who would like to attend. This will be a good time to work on items that we can sell at the *Touch of Class* craft fair that we have signed up for in October. We need our members to turn bowls for this craft sale. Dave informed me that the wood in his storage box that the club cut and sealed is starting to crack. Any member who would like to take some of this wood and turn bowls for the craft sale should contact Dave Mills. This wood is still quite wet so you should get in touch with Dave as soon as possible so that the wood can be rough turned and allowed to dry so that we can have finished items by the 14th of October.

We are still working on getting several outside demonstrators to provide programs to our members at meetings before the end of the year. We will keep you posted on our efforts. Enjoy the remainder of the summer. – John Compston, President [Photos by Maggie Porter]

CVW Club BBQ

I would like to thank everyone for their kind comments at the Club BBQ. It's always nice to feel your efforts are appreciated. Maggie and I tried to keep it simple so that no one would have to prepare and bring dishes for the event. Luck favored us as I forgot to supply the tomato and onion slices. Had I remembered, it would have rendered the burgers so tall we would have had numerous dislocated jaws to deal with!

There was always someone ready to help when it was needed and that made it much easier on the crew. The crew: Mel Swingrover who brought the donuts, ice, and fruit salad; Dave Mills who brought the trailer and set up the lathes for display, as well as all the wood for the raffle and craft sale; Dave Rich and Gary James who volunteered and did a fantastic job of grilling the burgers. Extra kudos go to Dave Mills and Mel for arriving early and staying late to set up tables and chairs and pack them away again in the trailer after everyone was gone. Now, the really, really big thank you goes to my wife Maggie for all the help she provided in putting on this BBQ. Planning, shopping, cleaning, putting the special ingredients in the burger mix, adding extras to the fruit salad, an emergency trip to the store (when the whipping cream we'd purchased the day before had rendered itself into sour cream), and mostly for putting up with me. I did take care of the beans and the ice cream making, and I had the worst job of all - "directing" Maggie's every move without getting shot.

I think everyone had a good time and several members said they would like to have the club put on another BBQ next year. If we decide to have another BBQ again next summer, Dave Mills has volunteered to have it at his place. If someone else would like to host the BBQ, that would be great too, as it would give the Board members a much needed break in the action.

It was especially nice to see the better halves in attendance - you know - the ones who really have control of the purse strings when it comes to new lathes, tools, wood purchases, etc. When they are in the mix it gives the turners a chance to get in a few "Oh wow, you have one of those? I didn't even know they made such a tool. Gee whiz, I sure wish I had one. Man-oh-Man, just think what I could do if I had one too". Sometimes it even works. - Wayne Porter

STIHL Recalls Chain Saws Due to Risk of Injury

The U.S. Consumer Product Safety Commission, in cooperation with the firm named below, announced a voluntary recall of the following consumer product. Consumers should stop using recalled products immediately unless otherwise instructed. It is illegal to resell or attempt to resell a recalled consumer product.

Name of Product: MS 391 Chain Saws

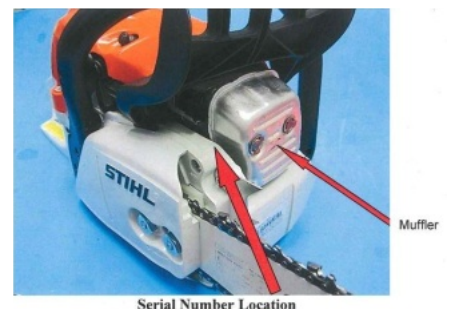
Units: About 3,000

Manufacturer: STIHL Inc., of Virginia Beach, Va.

Hazard: The flywheel on the chain saw can crack causing parts of the flywheel to separate and strike users or bystanders, posing a risk of injury.

Incidents/Injuries: None reported.

Description: This recall involves STIHL MS 391 gas-powered chain saws with an orange top casing, gray base and black front handle and hand guard. "STIHL" and "MS 391" are printed in an orange circle on the starter side of the unit. The serial number is located on the crankcase to the right of the muffler when viewed from the rear of the saw. Serial numbers included in the recall are: 28535-1759



through 28535-1956, 28664-5278 through 28664-6277, 28665-1283 through 28665-5577, 28724-4317 through 28724-4480, 28735-3627 through 28735-3647.

Sold at: Authorized STIHL dealers nationwide from March 2011 through July 2011 for between \$530 and \$550.

Manufactured in: United States

Remedy: Consumers should immediately stop using the recalled chain saws and return them to an authorized STIHL dealer for the installation of a free replacement flywheel.

Consumer Contact: For additional information, consumers should contact STIHL at (800) 610-6677 between 8 a.m. and 8 p.m. ET Monday through Friday, or visit the firm's website at www.stihlusa.com. Consumers also can email the firm at stihlrecall@stihl.us

What Safety Procedures Should You Follow When Using a Woodturning Lathe?

- Wear safety goggles or face shield to protect yourself from flying chips.
- Wear hearing protection that is suitable for the level and frequency of the noise you are exposed to in the woodworking area.
- Wear a dusk mask when dust is generated (e.g., during sanding operations).
- Wear protective footwear when required.
- Work in well-lighted area.
- Before the lathe is turned on, ensure that all clamps and fittings are secure and that the work piece is free to turn.
- Use stock free of defects.
- Hold tools firmly with both hands and against the tool rest.
- Hold the stock securely on the faceplate or between the centers.
- Use only furnished or approved tools.
- Use sharp, well-maintained chisels and gouges.
- Select a speed that is appropriate for the job. Operate the lathe at a low speed and use a moderate cut depth to prevent splinters from flying out during roughing operations. The actual speed of the lathe depends on type of wood, a diameter of stock, nature of work being done and type of tool used.
- Adjust tool rests so that they are parallel and as close as possible to the stock. They should also be set high enough so that tools will cut into the wood slightly above the center of the work being turned.
- Remove the tool rest when sanding or polishing.
- Use appropriate methods or tools to hold the sandpaper whenever possible. If you use your hands, always hold the paper in a way that will not allow the paper to catch, pull, or entangle around the stock.

Web Site for Woodturners

Not as automated as the *Wood Explorer* below, this web site at the University of North Carolina identifies and pictures radial, tangential, and cross-sectional areas of 350 North American woods from the 14-volume rare book [*The American Woods*](#), published between 1888 and 1910 by the author, Romeyn Beck Hough. The images can be accessed by volume number or by the scientific or common name of each tree.

Wood Apps for Androids

Here are two apps that are useful around wood, and available for Android smartphones. (Sorry, Siri.)

[Handyman Calculator](#). This free app is very powerful and contains many functions useful to those who work with wood, such as: feet and inches calculator; fraction calculator; lumber, concrete, and asphalt calculator; yards, feet, inches, meters, centimeters, millimeters conversion; square inches, square centimeters, square meters, square feet, square yards, acres, hectares, conversion; board foot calculator; lumber weight calculator; lumber log volume calculator.

[Wood Explorer](#). This app comes in a free, standard, and premium version with increasing levels of capability. The premium version contains 1650 species of wood with detailed specifications and pictures of each. It is fully searchable. You might be able to discover what that log was that you found in a ditch on Highway 88. – Bill Draper

Dates to Remember

The **21st annual Southwest Association of Turners Symposium (SWAT)** will be held in the Waco (TX) Convention Center on August 24th - 26th, 2012. Lead demonstrators include Barbara Dill, Cindy Drozda, Michael Hosaluk, Todd Hoyer, Johannes Michelson, Joe Ruminski, Hayley Smith, and Steve Sinner. An additional eleven regional demonstrators will be featured for a total of fifty-four demonstration rotations. Last year's symposium attracted over 800 attendees and this year promises to be even more exciting. For more information, visit www.SWATurners.org or contact SWAT President, Janice Levi at jlevi@rightturnonly.net.

The **14th Annual Rocky Mountain Woodturning Symposium** will be held at [The Ranch / Larimer County Fair Grounds](#) in Loveland, Colorado, on September 7th - 9th, 2012. It is sponsored by the [Rocky Mountain Woodturners](#). Featured demonstrators include John Jordan, J. Paul Fennell, Johannes Michelsen, Trent Bosch, and Allen Jensen.

The **3rd Segmenting Symposium** will be held October 18th - 21st at the Horizon Resort and Casino in Stateline, NV. This event will address all aspects of segmented woodturning from decorative vessels to sculptural art. There will be 36 sessions led by a faculty of 14, including John Beaver, Andy Chen, Dennis Daudelin, Ray Feltz, Lloyd Johnson, Bill Kandler, Dennis Keeling, Craig Kirks, Phil Miller, Michael Mode, Dave Peck, Jim Rodgers, Mike Shuler, and Malcolm Tibbetts. For info, visit the website at <http://www.segmentedwoodturners.org>.

Newsletter Editor's Request

Please send your newsletter contributions and suggestions for improvement to Bill Draper via cwnews@charter.net no later than Monday of the week before the next regularly scheduled meeting. The submission deadline for the September 2012 newsletter is August 27th.

CVW Meeting Location and Directions

This month's CVW meeting will convene in Dave Mills' shop on August 11th at 9 a.m. The address is 20599 Highway 88. Drive south 4.2 miles past the California border to the Toiyabe National Forest sign and proceed another 75 yards. (If you end up in Woodfords, you went too far.) Turn left on Memdewee Down Street, then right at the gate for Zuni Pines, and continue down the drive to the green barn. We all appreciate Dave's willingness to hold a CVW meeting in his shop.

Carson Valley Woodturners' Officers

President: John Compston – 775-690-6011

Treasurer: Wayne Porter – 775-265-7887

Vice President: Mel Swingrover – 775-783-3299

Secretary: Dave Mills – 530-694-2565

www.carsonvalleywoodturners.com

Resources

The Carson Valley Woodturners wish to express our appreciation for the support provided by generous vendors. Please visit their stores and web sites for your woodturning and woodworking needs.

SIERRA MOLD CORPORATION

• Precision Machining & Engineered Products
• Machine Tool Accessories
• CNC Machining
• Sierra Racing Products Division

Ronald L. Burdick
PRESIDENT

1558 FORREST WAY • CARSON CITY, NEVADA 89706 USA
(775) 882-3500 • FAX (775) 882-2502



www.hartvilletool.com

800-345-2396

the Woodworking SOURCE

9744 South Virginia Street, Suite E, Reno, NV 89511
Store Phone: 775-624-9174 Store Fax: 877-530-9663

Ralph Benson
Mobile: 775-762-1160
ralph@the-woodworking-source.com

the-woodworking-source.com

Craft Supplies USA

Phone Orders:

1-800-551-8876

Web Orders:

www.woodturnerscatalog.com

Exotic Woods USA

Contact Editor for 15% Discount Code

Phone Orders:

1-631-651-8651

Web Orders:

<http://www.exoticwoodsusa.com>